



14a Mornington Road, Ashford, TW15 1NW

£500,000

14a Mornington Road, Ashford, TW15 1NW

Situated within one of Ashford's most sought-after residential roads, this attractive three-bedroom semi-detached family home offers well-planned accommodation, together with an integral garage providing excellent potential for conversion (subject to the usual consents). Ideally positioned within easy reach of transport links, highly regarded schools and local parks, the property presents an ideal opportunity for families and commuters alike.

The ground floor features a welcoming entrance hall leading to a fitted kitchen and an impressive 20ft dual-aspect living/dining room, providing a bright and spacious space for both everyday living and entertaining, with direct access to the rear garden. The integral garage offers useful storage, secure parking or scope to create additional living accommodation if desired.

Upstairs, the property comprises three well-proportioned bedrooms, including a generous principal bedroom with fitted wardrobes, a comfortable second double bedroom, a versatile third bedroom ideal as a child's room or home office, and a family bathroom.

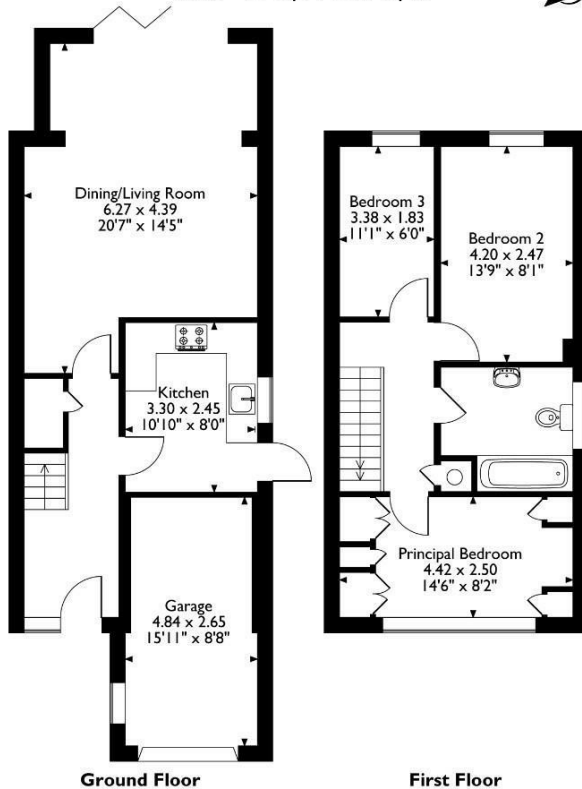
Outside, the property has a pretty rear garden and benefits from driveway parking leading to the garage. Offering excellent potential to modernise or convert (subject to the necessary planning permissions), this is a fantastic opportunity to create a wonderful long-term family home in a highly desirable location.

Early viewing is highly recommended and can be booked by calling Aspen Estate Agents.



Floor Plan

14A, Mornington Road, Ashford, Surrey
 Approximate Gross Internal Area
 Main House = 85 Sq M/915 Sq Ft
 Garage = 12 Sq M/129 Sq Ft
 Total = 97 Sq M/1044 Sq Ft

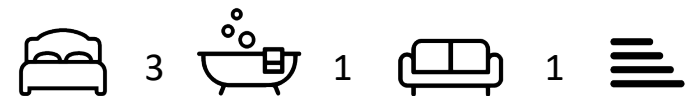


Please note that the location of doors, windows and other items are approximate and this floorplan is to be used for illustrative purposes only. Unauthorized reproduction is prohibited.



Features

- Three-bedroom semi-detached family home
- Spacious 20ft dual-aspect living/dining room
- Driveway providing off-street parking
- Scope to modernise and convert (STPP)
- Sought-after residential road in Ashford
- Integral garage with potential to convert (STPP)
- Pretty rear garden
- Close to excellent schools, parks and transport links



Tenure - Freehold Council Tax Band -

